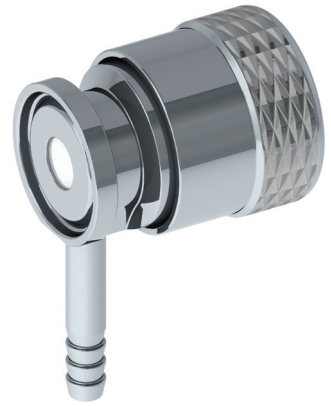


ART. 046

ASEPTIC SAMPLING VALVES



COMPACT ASEPTIC SAMPLING VALVES

Characteristics: Designed for sterile sampling of liquids on pharmaceutical products. Radial diaphragm with extremely compact design. Diaphragm closes at the inlet seat of the product port connection, eliminating the dead leg. Engineered for Aseptic and High Purity Applications. PTFE or Silicone and AISI 316 L without asymptotic seals. All versions are fully autoclavable. Removable handle available for valves equipped with SIP connection.

Documentation: Laser marking for traceability and validation processes. Material 3.1 certificates, FDA or USP, internal surface finishing check as standard.

1 HOSE BARB OUTLET



ART. 046/A
P. 012

1 TRI-CLAMP OUTLET



ART. 046/B
P. 013

1 HOSE BARB OUTLET
+ 1 CIP HOSE BARB INLET



ART. 046/C
P. 014

1 HOSE BARB OUTLET
+ 1 CIP TRI-CLAMP INLET

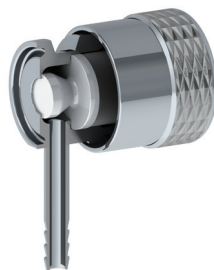


ART. 046/D
P. 015

1 TRI-CLAMP OUTLET
+ 1 CIP TRI-CLAMP INLET



ART. 046/E
P. 016



ASTM A270 Tri-Clamp - Flange design according to ASME-BPE

Size	Ø A	Ø C	Valve Material	Diaphragm Material	Code
1/2" - 3/4" *	25,00		1.4404	SILICONE FDA	046A60050SIF
				PTFE - USP 121	046A60050PT121
1"		50,50	1.4404	SILICONE FDA	046A60100SIF
				PTFE - USP 121	046A60100PT121
1.1/2"		50,50	1.4404	SILICONE FDA	046A60150SIF
				PTFE - USP 121	046A60150PT121

* Special clamp included

Int. finishing: **Ra ≤ 0,4 µm**
Ext. finishing: **Ra ≤ 0,8 µm Mirror Polished**

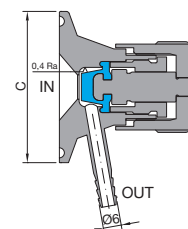
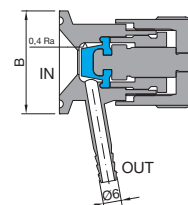
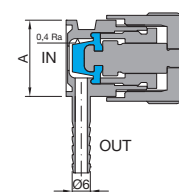
Max Working Conditions:
8 bar (120 psi) and 150°C (300°F)

Gaskets:
FDA approved SILICONE
or **USP CLASS VI - 121° PTFE**

Installation:
Horizontal installation recommended

DIN 32676 Tri-Clamp

Size	Ø B	Ø C	Valve Material	Diaphragm Material	Code
DN 10	34,00		1.4404	SILICONE FDA	046A6D010SIF
				PTFE - USP 121	046A6D010PT121
DN 15	34,00		1.4404	SILICONE FDA	046A6D015SIF
				PTFE - USP 121	046A6D015PT121
DN 20	34,00		1.4404	SILICONE FDA	046A6D020SIF
				PTFE - USP 121	046A6D020PT121
DN 25		50,50	1.4404	SILICONE FDA	046A6D025SIF
				PTFE - USP 121	046A6D025PT121
DN 32		50,50	1.4404	SILICONE FDA	046A6D032SIF
				PTFE - USP 121	046A6D032PT121
DN 40		50,50	1.4404	SILICONE FDA	046A6D040SIF
				PTFE - USP 121	046A6D040PT121



ISO 1127 Tri-Clamp

Size	Ø B	Ø C	Valve Material	Diaphragm Material	Code
DN 8	34,00		1.4404	SILICONE FDA	046A6I008SIF
				PTFE - USP 121	046A6I008PT121
DN 10	34,00		1.4404	SILICONE FDA	046A6I010SIF
				PTFE - USP 121	046A6I010PT121
DN 15	34,00		1.4404	SILICONE FDA	046A6I015SIF
				PTFE - USP 121	046A6I015PT121
DN 20		50,50	1.4404	SILICONE FDA	046A6I020SIF
				PTFE - USP 121	046A6I020PT121
DN 25		50,50	1.4404	SILICONE FDA	046A6I025SIF
				PTFE - USP 121	046A6I025PT121
DN 32		50,50	1.4404	SILICONE FDA	046A6I032SIF
				PTFE - USP 121	046A6I032PT121

1 TRI-CLAMP OUTLET



ASTM A270 Tri-Clamp - Flange design according to ASME-BPE

Size	Ø A	Ø C	Valve Material	Diaphragm Material	Code
1/2" - 3/4" *	25,00		1.4404	SILICONE FDA	046B60050SIF
				PTFE - USP 121	046B60050PT121
1"		50,50	1.4404	SILICONE FDA	046B60100SIF
				PTFE - USP 121	046B60100PT121
1.1/2"		50,50	1.4404	SILICONE FDA	046B60150SIF
				PTFE - USP 121	046B60150PT121

* Special clamp included

Int. finishing: **Ra ≤ 0,4 µm**
Ext. finishing: **Ra ≤ 0,8 µm Mirror Polished**

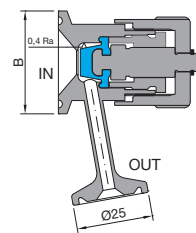
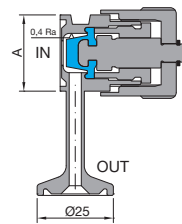
Max Working Conditions:
8 bar (120 psi) and 150°C (300°F)

Gaskets:
FDA approved SILICONE
or **USP CLASS VI - 121° PTFE**

Installation:
Horizontal installation recommended

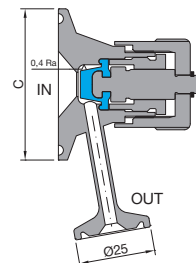
DIN 32676 Tri-Clamp

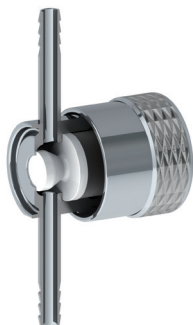
Size	Ø B	Ø C	Valve Material	Diaphragm Material	Code
DN 10	34,00		1.4404	SILICONE FDA	046B6D010SIF
				PTFE - USP 121	046B6D010PT121
DN 15	34,00		1.4404	SILICONE FDA	046B6D015SIF
				PTFE - USP 121	046B6D015PT121
DN 20	34,00		1.4404	SILICONE FDA	046B6D020SIF
				PTFE - USP 121	046B6D020PT121
DN 25		50,50	1.4404	SILICONE FDA	046B6D025SIF
				PTFE - USP 121	046B6D025PT121
DN 32		50,50	1.4404	SILICONE FDA	046B6D032SIF
				PTFE - USP 121	046B6D032PT121
DN 40		50,50	1.4404	SILICONE FDA	046B6D040SIF
				PTFE - USP 121	046B6D040PT121



ISO 1127 Tri-Clamp

Size	Ø B	Ø C	Valve Material	Diaphragm Material	Code
DN 8	34,00		1.4404	SILICONE FDA	046B6I008SIF
				PTFE - USP 121	046B6I008PT121
DN 10	34,00		1.4404	SILICONE FDA	046B6I010SIF
				PTFE - USP 121	046B6I010PT121
DN 15	34,00		1.4404	SILICONE FDA	046B6I015SIF
				PTFE - USP 121	046B6I015PT121
DN 20		50,50	1.4404	SILICONE FDA	046B6I020SIF
				PTFE - USP 121	046B6I020PT121
DN 25		50,50	1.4404	SILICONE FDA	046B6I025SIF
				PTFE - USP 121	046B6I025PT121
DN 32		50,50	1.4404	SILICONE FDA	046B6I032SIF
				PTFE - USP 121	046B6I032PT121





ASTM A270 Tri-Clamp - Flange design according to ASME-BPE

Size	Ø A	Ø C	Valve Material	Diaphragm Material	Code
1/2" - 3/4" *	25,00		1.4404	SILICONE FDA	046C60050SIF
				PTFE - USP 121	046C60050PT121
1"		50,50	1.4404	SILICONE FDA	046C60100SIF
				PTFE - USP 121	046C60100PT121
1.1/2"		50,50	1.4404	SILICONE FDA	046C60150SIF
				PTFE - USP 121	046C60150PT121

* Special clamp included

Int. finishing: **Ra ≤ 0,4 µm**
Ext. finishing: **Ra ≤ 0,8 µm Mirror Polished**

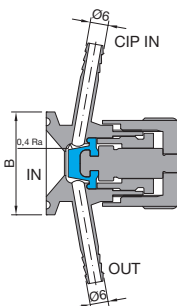
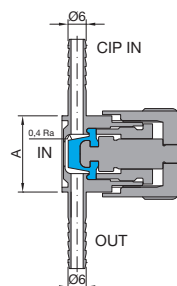
Max Working Conditions:
8 bar (120 psi) and 150°C (300°F)

Gaskets:
FDA approved SILICONE
or **USP CLASS VI - 121° PTFE**

Installation:
Horizontal installation recommended

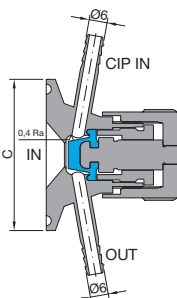
DIN 32676 Tri-Clamp

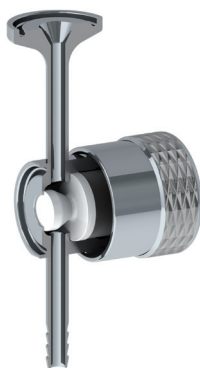
Size	Ø B	Ø C	Valve Material	Diaphragm Material	Code
DN 10	34,00		1.4404	SILICONE FDA	046C6D010SIF
				PTFE - USP 121	046C6D010PT121
DN 15	34,00		1.4404	SILICONE FDA	046C6D015SIF
				PTFE - USP 121	046C6D015PT121
DN 20	34,00		1.4404	SILICONE FDA	046C6D020SIF
				PTFE - USP 121	046C6D020PT121
DN 25		50,50	1.4404	SILICONE FDA	046C6D025SIF
				PTFE - USP 121	046C6D025PT121
DN 32		50,50	1.4404	SILICONE FDA	046C6D032SIF
				PTFE - USP 121	046C6D032PT121
DN 40		50,50	1.4404	SILICONE FDA	046C6D040SIF
				PTFE - USP 121	046C6D040PT121



ISO 1127 Tri-Clamp

Size	Ø B	Ø C	Valve Material	Diaphragm Material	Code
DN 8	34,00		1.4404	SILICONE FDA	046C6I008SIF
				PTFE - USP 121	046C6I008PT121
DN 10	34,00		1.4404	SILICONE FDA	046C6I010SIF
				PTFE - USP 121	046C6I010PT121
DN 15	34,00		1.4404	SILICONE FDA	046C6I015SIF
				PTFE - USP 121	046C6I015PT121
DN 20		50,50	1.4404	SILICONE FDA	046C6I020SIF
				PTFE - USP 121	046C6I020PT121
DN 25		50,50	1.4404	SILICONE FDA	046C6I025SIF
				PTFE - USP 121	046C6I025PT121
DN 32		50,50	1.4404	SILICONE FDA	046C6I032SIF
				PTFE - USP 121	046C6I032PT121





ASTM A270 Tri-Clamp - Flange design according to ASME-BPE

Size	Ø A	Ø C	Valve Material	Diaphragm Material	Code
1/2" - 3/4" *	25,00		1.4404	SILICONE FDA	046D60050SIF
				PTFE - USP 121	046D60050PT121
1"		50,50	1.4404	SILICONE FDA	046D60100SIF
				PTFE - USP 121	046D60100PT121
1.1/2"		50,50	1.4404	SILICONE FDA	046D60150SIF
				PTFE - USP 121	046D60150PT121

* Special clamp included

Int. finishing: **Ra ≤ 0,4 µm**
Ext. finishing: **Ra ≤ 0,8 µm Mirror Polished**

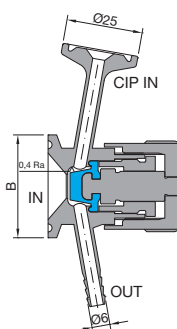
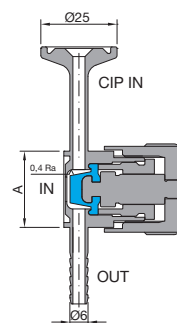
Max Working Conditions:
8 bar (120 psi) and 150°C (300°F)

Gaskets:
FDA approved SILICONE
or **USP CLASS VI - 121° PTFE**

Installation:
Horizontal installation recommended

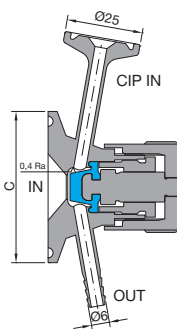
DIN 32676 Tri-Clamp

Size	Ø B	Ø C	Valve Material	Diaphragm Material	Code
DN 10	34,00		1.4404	SILICONE FDA	046D6D010SIF
				PTFE - USP 121	046D6D010PT121
DN 15	34,00		1.4404	SILICONE FDA	046D6D015SIF
				PTFE - USP 121	046D6D015PT121
DN 20	34,00		1.4404	SILICONE FDA	046D6D020SIF
				PTFE - USP 121	046D6D020PT121
DN 25		50,50	1.4404	SILICONE FDA	046D6D025SIF
				PTFE - USP 121	046D6D025PT121
DN 32		50,50	1.4404	SILICONE FDA	046D6D032SIF
				PTFE - USP 121	046D6D032PT121
DN 40		50,50	1.4404	SILICONE FDA	046D6D040SIF
				PTFE - USP 121	046D6D040PT121



ISO 1127 Tri-Clamp

Size	Ø B	Ø C	Valve Material	Diaphragm Material	Code
DN 8	34,00		1.4404	SILICONE FDA	046D6I008SIF
				PTFE - USP 121	046D6I008PT121
DN 10	34,00		1.4404	SILICONE FDA	046D6I010SIF
				PTFE - USP 121	046D6I010PT121
DN 15	34,00		1.4404	SILICONE FDA	046D6I015SIF
				PTFE - USP 121	046D6I015PT121
DN 20		50,50	1.4404	SILICONE FDA	046D6I020SIF
				PTFE - USP 121	046D6I020PT121
DN 25		50,50	1.4404	SILICONE FDA	046D6I025SIF
				PTFE - USP 121	046D6I025PT121
DN 32		50,50	1.4404	SILICONE FDA	046D6I032SIF
				PTFE - USP 121	046D6I032PT121





ASTM A270 Tri-Clamp - Flange design according to ASME-BPE

Size	Ø A	Ø C	Valve Material	Diaphragm Material	Code
1"		50,50	1.4404	SILICONE FDA	046E60100SIF
				PTFE - USP 121	046E60100PT121
1.1/2"		50,50	1.4404	SILICONE FDA	046E60150SIF
				PTFE - USP 121	046E60150PT121

Int. finishing: **Ra ≤ 0,4 µm**
Ext. finishing: **Ra ≤ 0,8 µm Mirror Polished**

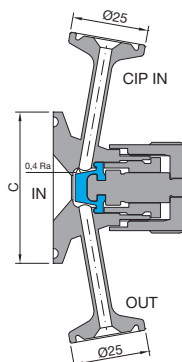
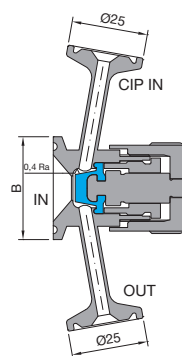
Max Working Conditions:
8 bar (120 psi) and 150°C (300°F)

Gaskets:
FDA approved SILICONE
or USP CLASS VI - 121° PTFE

Installation:
Horizontal installation recommended

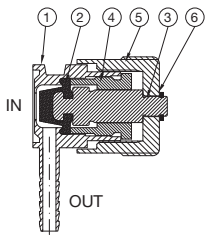
DIN 32676 Tri-Clamp

Size	Ø B	Ø C	Valve Material	Diaphragm Material	Code
DN 10	34,00		1.4404	SILICONE FDA	046E6D010SIF
				PTFE - USP 121	046E6D010PT121
DN 15	34,00		1.4404	SILICONE FDA	046E6D015SIF
				PTFE - USP 121	046E6D015PT121
DN 20	34,00		1.4404	SILICONE FDA	046E6D020SIF
				PTFE - USP 121	046E6D020PT121
DN 25		50,50	1.4404	SILICONE FDA	046E6D025SIF
				PTFE - USP 121	046E6D025PT121
DN 32		50,50	1.4404	SILICONE FDA	046E6D032SIF
				PTFE - USP 121	046E6D032PT121
DN 40		50,50	1.4404	SILICONE FDA	046E6D040SIF
				PTFE - USP 121	046E6D040PT121

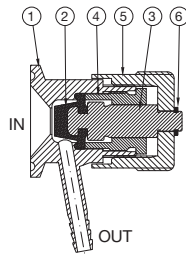


ISO 1127 Tri-Clamp

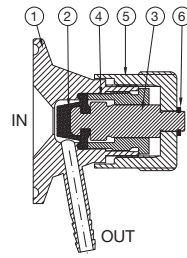
Size	Ø B	Ø C	Valve Material	Diaphragm Material	Code
DN 8	34,00		1.4404	SILICONE FDA	046E6I008SIF
				PTFE - USP 121	046E6I008PT121
DN 10	34,00		1.4404	SILICONE FDA	046E6I010SIF
				PTFE - USP 121	046E6I010PT121
DN 15	34,00		1.4404	SILICONE FDA	046E6I015SIF
				PTFE - USP 121	046E6I015PT121
DN 20		50,50	1.4404	SILICONE FDA	046E6I020SIF
				PTFE - USP 121	046E6I020PT121
DN 25		50,50	1.4404	SILICONE FDA	046E6I025SIF
				PTFE - USP 121	046E6I025PT121
DN 32		50,50	1.4404	SILICONE FDA	046E6I032SIF
				PTFE - USP 121	046E6I032PT121



ASTM A270: Ø A 25



DIN / ISO: Ø B 34



ASTM A270 / DIN / ISO: Ø C 50,50

N°	Name	Material
1	Body	AISI 316L
2	Diaphragm	SILICONE FDA or PTFE
3	Piston	AISI 316L
4	Ring	AISI 316L
5	Handle	AISI 316L
6	Seeger	AISI 304

N°	Description	Valve size	Code
2	Diaphragm PTFE - USP 121° - n° 1 pcs	all sizes	046ZXPT121002
2	Diaphragm SILICONE FDA - n° 1 pcs	all sizes	046ZXSIF002
2+3	Diaphragm PTFE - USP 121° + Piston - n° 1 + 1 pcs	all sizes	046ZX000023K2
2+3	Diaphragm SILICONE FDA + Piston - n° 1 + 1 pcs	all sizes	046ZX000023K1
3	Piston for PTFE Diaphragm - n° 1 pcs	all sizes	046Z6PT121003
4	Ring - n° 1 pcs	all sizes	046Z6000004
5	Stainless Steel Handle - n° 1 pcs	all sizes	046Z6000005
6	Seeger - n° 10 pcs	all sizes	SEEGERSV
10	Piston for SILICONE Diaphragm - n° 1 pcs	all sizes	046Z6SIF003