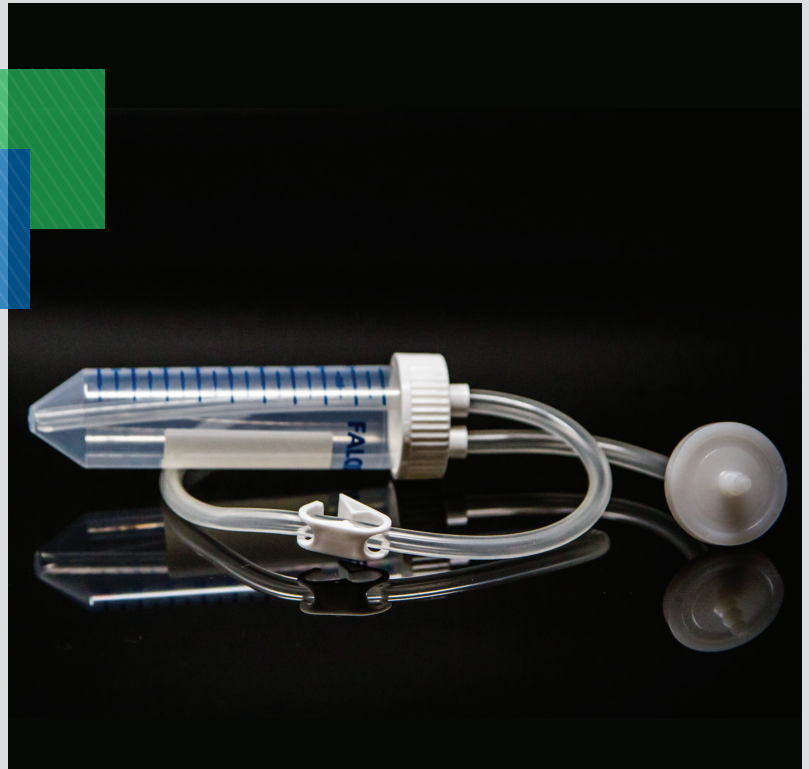




SaniSure®  
Solution Based Innovation

# Sterile Centrifuge Tube Assemblies



**Engineered, Single-Use Solutions  
Reducing Operational Cost, Improving  
Production Efficiency**

- Molded and Unitized Construction (No Adhesives)
- Certified Sterile
- Cost-Effective Aseptic Transfer and Sampling Device
- One Continuous Flow Path
- Lot Traceable
- Meets USP Class VI

## FEATURES

## BENEFITS

### ONE-PIECE MOLDED CAP DESIGN

Ideal single-use solution for obtaining fluid samples. All options can be welded & heat sealed and PVC can be RF sealed for a faster sterile disconnect

### MATERIALS OF CONSTRUCTION

C-Flex®, PVC tubing, Polypropylene & Polystyrene tubes

### SINGLE USE

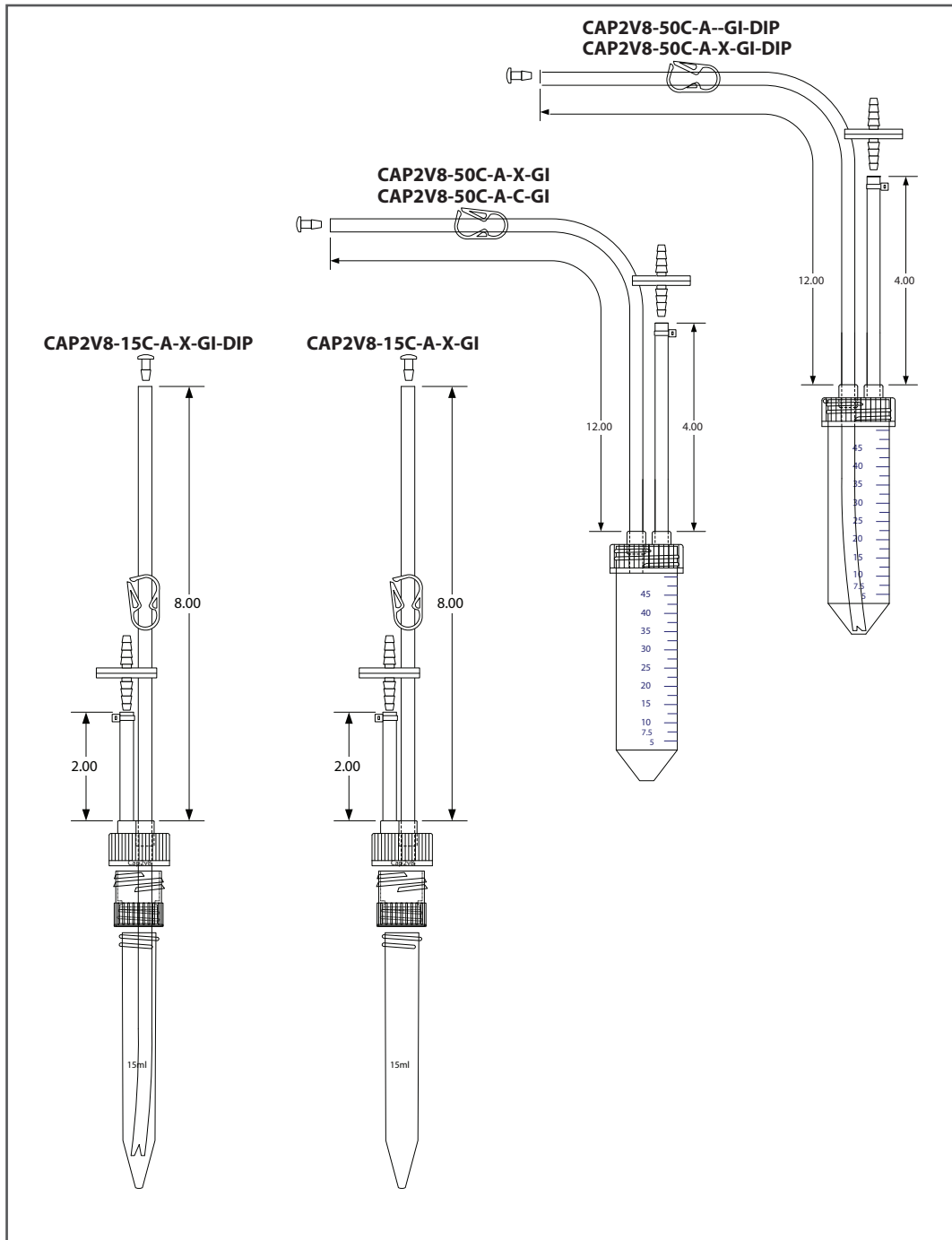
Cost effective; Reduced assembly and installation time; Eliminates cleaning validation

### CUSTOM DESIGN CAPABILITIES

SaniSure® offers a full array of custom options, including tubing, fittings/end connections, sterile connectors and bottle variations

# Centrifuge Tubes

## Technical Drawing Samples



### APPLICATIONS

- Tissue and cell culture media
- Cell fermentation
- Pilot and process research and development
- Laboratory research
- Aseptic sampling
- Vaccine production
- Sterile filling and transfer

### STERILIZATION

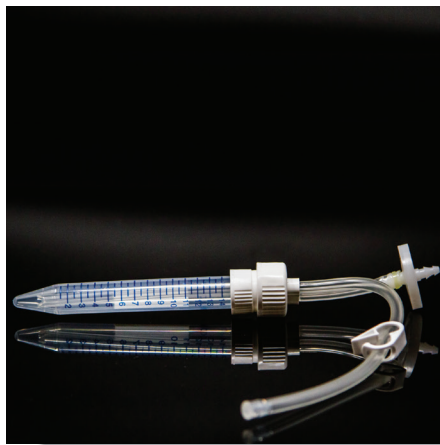
Gamma irradiated  
to sterility assurance  
level  $10^{-6}$



## 50ml CENTRIFUGE TUBE

This 50 ml Cap2v8<sup>®</sup> assembly uses our Cap2v8-50 with a polypropylene centrifuge tube and has both a C-Flex<sup>®</sup> and PVC option and comes with an 12-inch feed line with pinch clamp, the choice of with or without dip tube, and a 4-inch vent line with hydrophobic vent filter. This standard design comes certified sterile.

PART NUMBER	Cap2v8	CONTAINER	FEED 1	VENT NO DIP	MATERIAL
CAP2V8-50C-A-X-GI	50	50ml CENTRIFUGE TUBE	1/8 by 1/4	1/8 BY 1/4	C-FLEX
CAP2V8-50C-A-X-GI-DIP	50	50ml CENTRIFUGE TUBE	1/8 BY 1/4 WITH DIP TUBE	1/8 BY 1/4	C-FLEX
CAP2V8-50C-A-C-GI	50	50ml CENTRIFUGE TUBE	1/8 by 1/4	1/8 BY 1/4	PVC
CAP2V8-50C-A--GI-DIP	50	50ml CENTRIFUGE TUBE	1/8 BY 1/4 WITH DIP TUBE	1/8 BY 1/4	PVC



## 15 ml CENTRIFUGE TUBE

This 15 mL Cap2v8<sup>®</sup> assembly uses a polypropylene adapter along with our Cap2v8-24-415 in C-Flex<sup>®</sup> and a polystyrene centrifuge tube. The design includes an 8-inch feed line with pinch clamp, the choice of with or without dip tube, and a 2-inch vent line with hydrophobic vent filter. This standard design comes certified sterile.

PART NUMBER	Cap2v8	CONTAINER	FEED 1	VENT NO DIP	MATERIAL
CAP2V8-15C-A-X-GI	50	15ml CENTRIFUGE TUBE	1/8 by 1/4	1/8 by 1/4	C-FLEX
CAP2V8-15C-A-X-GI-DIP	50	15ml CENTRIFUGE TUBE	1/8 by 1/4 with dip tube	1/8 by 1/4	C-FLEX



## CAP2V8 500 for 500ml CENTRIFUGE TUBE

Please contact your SaniSure representative to discuss our multiple options and design your custom 500 ml Centrifuge tube and to help you design.

Cap2v8	FEED 1 WITH DIP TUBE	FEED 2 WITH DIP TUBE	FEED 3 NO DIP	VENT NO DIP	CAP MATERIAL
500 for 500ml Centrifuge Tube	1/8 by 1/4	1/8 by 1/4	1/8 by 1/4	1/8 by 1/4	C-FLEX ADVANTAFLEX



## CAP2V8 5 for 5ml CENTRIFUGE TUBE

Please contact your sanisure representative to help you design your own custom centrifugate assembly.

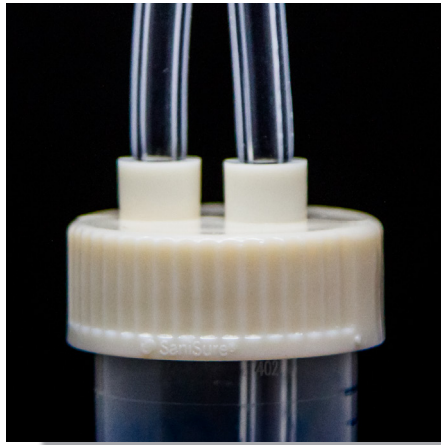
Cap2v8	FEED 1 WITH DIP TUBE	VENT NO DIP	CAP MATERIAL
5 for 5ml Centrifuge Tube	1/8 by 1/4	N/A	C-FLEX ADVANTAFLEX



## CAP2V8 15 for 15ml CENTRIFUGE TUBE

Please contact your sanisure representative to help you design your own custom centrifugate assembly.

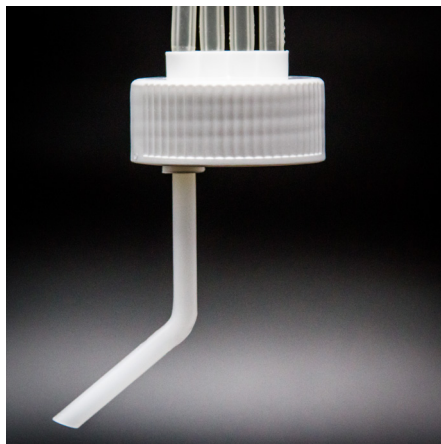
Cap2v8	FEED 1 WITH DIP TUBE	VENT NO DIP	CAP MATERIAL
15 for 15ml Centrifuge Tube	1/8 by 1/4	N/A	C-FLEX ADVANTAFLEX PHARMED PVC with HYTREL



## CAP2V8 50 for 50ml CENTRIFUGE TUBE

Please contact your sanisure representative to help you design your own custom centrifugate assembly.

Cap2v8	FEED 1 WITH DIP TUBE	VENT NO DIP	CAP MATERIAL
50 for 50ml Centrifuge Tube	1/8 by 1/4	N/A	C-FLEX ADVANTAFLEX PHARMED PVC with HYTREL
50 for 50ml Centrifuge Tube	0.151 by 0.215	N/A	PVC with HYTREL



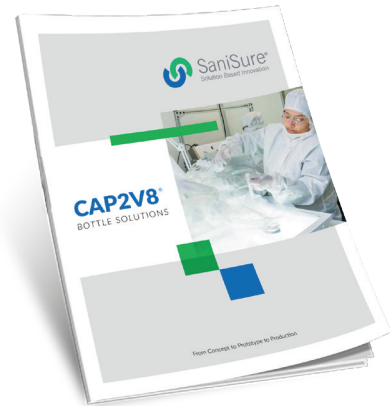
## PRECISION DIP TUBES

This precision dip tube allows you to withdraw a precise amount of liquid, isolating the pellet after the centrifuging process. This same technology can be used to accurately place a dip tube in any of our Cap2v8 bottle assemblies.

### Need more info?

Please check out our new catalog for more detailed information on all our Cap2v8<sup>®</sup> products and the exciting solutions SaniSure<sup>®</sup> can provide to you.

[sanisure.com](http://sanisure.com)



**IMPORTANT:** It is the user's responsibility to ensure the suitability and safety of SaniSure, Inc. products for all intended uses.

For a period of 90 days from the date of delivery, SaniSure, Inc. warrants this product to be free from defects in materials and workmanship. Our only obligation will be to replace any portion proving defective, or at our option, refund the purchase price thereof. User assumes all other risk, if any, including the risk of injury, loss or damage, direct or consequential, arising out of the use, misuse or inability to use this product. THIS LIMITED WARRANTY IS IN LIEU OF THE WARRANTIES OF MERCHANTABILITY, FITNESS FOR PARTICULAR PURPOSE AND ALL OTHER WARRANTIES, EXPRESSED OR IMPLIED. No deviation is authorized.

SaniSure, Inc. assumes no obligations or liability for any advice furnished by it or for results obtained with respect to those products. All such advice is given and accepted at the user's risk. SaniSure<sup>®</sup> is a registered trademark of SaniSure, Inc. All rights reserved. C-Flex<sup>®</sup> is a registered trademark of Saint-Gobain Performance Plastics Corporation. AdvantaFlex<sup>®</sup> is a registered trademark of AdvantaPure NewAge Industries.